

Universal Load Cell



FEATURES

- Capacities: 5 to 200Klbs
- Environmental protection: IP68 (DIN 40.050)
- Material: Epoxy coated alloy steel
- Hermetically sealed

OPTIONAL FEATURE

- FM approved for use in potentially explosive atmosphere

DESCRIPTION

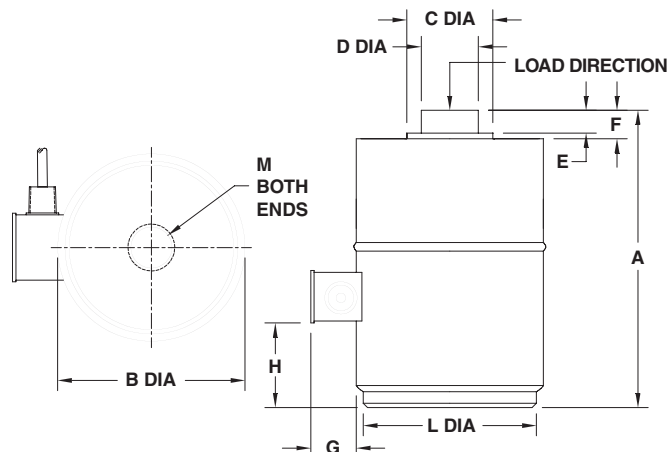
The 42U and 43 U canister is a low profile design specifically for platforms and for universal, tension and compression applications where space is limited or special mounting required.

Hermetic sealing offers excellent protection from moisture and provides longterm stability and reliability.

APPLICATIONS

- Railroad scales
- Truck and floor scales, platform scales
- Suspended silos, tanks and hoppers
- Silos, tanks and hoppers
- Weighbridges

OUTLINE DIMENSIONS in inches



Cable specifications:

Cable length: 3m (10ft)

Excitation + Red

Excitation - Black

Output + Green

Output - White

Shield Transparent

Cable screen is not connected to load cell body

Capacity	5 - 10K	20K	50K	100K	200 - 250K
A	5.94	8.50	11.44	11.44	16.25
B	3.50	5.00	6.50	6.50	8.00
C	1.63	2.44	2.98	3.50	4.45
D	1.40	2.21	2.76	3.29	4.21
E	0.15	0.15	0.15	0.15	0.15
F	0.50	0.50	0.77	0.77	0.80
G	1.19	1.29	1.40	1.40	1.34
H	0.75	0.75	1.50	1.50	1.50
M	1-14	1.5-12	1.5-12	2-12	2.5-12
deep	UNS	UNF	UNF	UNF	UNF
	1.25	2.00	2.00	2.25	2.75

Model 42U-43U

Vishay Revere

Universal Load Cell



SPECIFICATIONS

PARAMETER	VALUE	UNIT
	Imperial	
Capacities	5K, 10K, 20K, 50K, 100K, 200K, 250K	lbs
Accuracy class	Non-Approved	
Rated output (=S)	Model 42U: 2±0.002 Model 43U: 3±0.003	mV/V
Zero balance	1.0	±% FSO
Combined error	0.0500	±% FSO
Creep error (20 minutes)	0.0300	±% applied load
Temperature effect on zero	0.0135 (0.0015)	±% FSO/5°C (°F)
Temperature effect on output	0.0072 (0.0008)	±% applied load/5°C (°F)
Compensated temperature range	-10 to +40 (+14 to +104)	°C (°F)
Operating temperature range	-53 to +93 (-65 to +200)	°C (°F)
Safe load limit	150	%E _{max}
Ultimate load	Model 42U: 300 Model 43U: 200	%E _{max}
Safe side load limit	10	%E _{max}
Excitation voltage recommended	10	V
Excitation voltage maximum	15	V
Input resistance	350±3.5	Ω
Output resistance	350±3.5	Ω
Insulation resistance at 50VDC	≥5000	MΩ
Environmental protection	IP68	
Element material	Epoxy coated alloy steel	ASTM

FSO-Full Scale Output

Mounting:

Correct mounting of the load cells is essential to ensure optimum accuracy and performance. Further information is available upon request.



Notice

Specifications of the products displayed herein are subject to change without notice. Vishay Intertechnology, Inc., or anyone on its behalf, assumes no responsibility or liability for any errors or inaccuracies.

Information contained herein is intended to provide a product description only. No license, express or implied, by estoppel or otherwise, to any intellectual property rights is granted by this document. Except as provided in Vishay's terms and conditions of sale for such products, Vishay assumes no liability whatsoever, and disclaims any express or implied warranty, relating to sale and/or use of Vishay products including liability or warranties relating to fitness for a particular purpose, merchantability, or infringement of any patent, copyright, or other intellectual property right.

The products shown herein are not designed for use in medical, life-saving, or life-sustaining applications. Customers using or selling these products for use in such applications do so at their own risk and agree to fully indemnify Vishay for any damages resulting from such improper use or sale.