

Universal Load Cell



FEATURES

- Capacities: 100lbs to 3Klbs
- Environmental protection: IP68 (DIN 40.050)
- Material: Epoxy coated alloy steel
- Hermetically sealed

OPTIONAL FEATURE

- FM approved for use in potentially explosive atmosphere

DESCRIPTION

The 62HU and 63HU canister is a low profile design specifically for low capacity small platforms and for universal, tension and compression applications where space is limited or special mounting required.

Hermetic sealing offers excellent protection from moisture and provides longterm stability and reliability.

APPLICATIONS

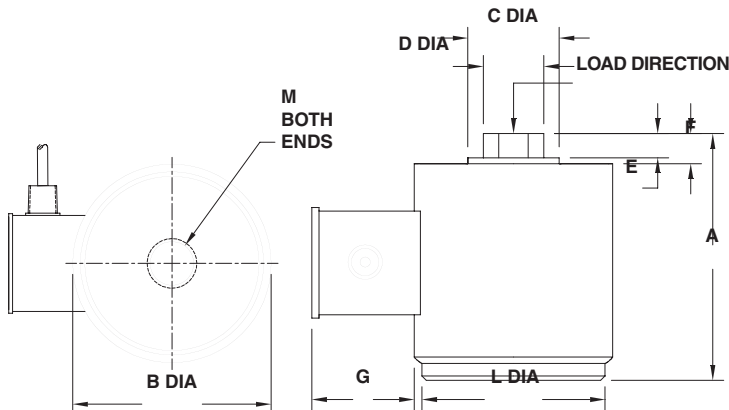
- Suspended silos, tanks and hoppers
- Silo, tanks and hoppers

OUTLINE DIMENSIONS in inches

Cable specifications:

Cable length: 3m (10ft)
 Excitation + Red
 Excitation - Black
 Output + Green
 Output - White
 Shield Transparent

Cable screen is not connected to load cell body



| Capacity | 100 - 300 | 500 - 1K | 2 - 3K |
|----------|---------------|---------------|---------------|
| A | 3.38 | 4.56 | 4.99 |
| B | 2.75 | 3.50 | 4.00 |
| C | 0.93 | 1.25 | 1.25 |
| ØD | 0.75 | 1.05 | 1.05 |
| E | 0.42 | 0.25 | 0.25 |
| F | 0.53 | 0.37 | 0.37 |
| G | 0.15 | 0.15 | 0.15 |
| L | 2.50 | 3.18 | 3.75 |
| ØM | 3/8-24 UNF-2B | 1/2-20 UNF-2B | 1/2-20 UNF-2B |

SPECIFICATIONS

| PARAMETER | VALUE | UNIT |
|--------------------------------|---|--------------------------|
| | Imperial | |
| Capacities | 100, 200, 300, 500, 750, 1K, 2K, 3K | lbs |
| Accuracy class | Non-Approved | |
| Rated output (=S) | Model 62HU: 2±0.002 Model 63HU: 3±0.003 | mV/V |
| Zero balance | 1.0 | ±% FSO |
| Combined error | 0.050 | ±% FSO |
| Creep error (20 minutes) | 0.0300 | ±% applied load |
| Temperature effect on zero | 0.0090 (0.0010) | ±% FSO/5°C (°F) |
| Temperature effect on output | 0.0135 (0.0015) | ±% applied load/5°C (°F) |
| Compensated temperature range | -10 to +40 (+14 to +104) | °C (°F) |
| Operating temperature range | -53 to +93 (-65 to +200) | °C (°F) |
| Safe load limit | 200 | %E _{max} |
| Ultimate load | 300 | %E _{max} |
| Safe side load limit | 10 | %E _{max} |
| Excitation voltage recommended | 10 | V |
| Excitation voltage maximum | 15 | V |
| Input resistance | 350±3.5 | Ω |
| Output resistance | 350±3.5 | Ω |
| Insulation resistance at 50VDC | ≥5000 | MΩ |
| Environmental protection | IP68 | |
| Element material | Epoxy coated alloy steel | ASTM |

FSO-Full Scale Output

Mounting:

Correct mounting of the load cells is essential to ensure optimum accuracy and performance. Further information is available upon request.