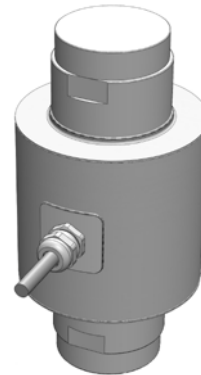


Compression Load Cell

FEATURES

- Capacities: 20, 30, 35, 40 and 50T
- Self-aligning, stainless steel single column
- Hermetically sealed, IP66/68 – 100 hr at 1 m
- Certified to OIML R60 6000d and NTEP IIIIL/10,000 d
- Built-in surge protection
- Current calibration output ensures easy and accurate parallel calibration of multiple load cells
- Compatible with original Model ASC
- **Optional**
 - Digital version available (Model DSC2)



APPLICATIONS

- Weighbridges
- Process weighing

DESCRIPTION

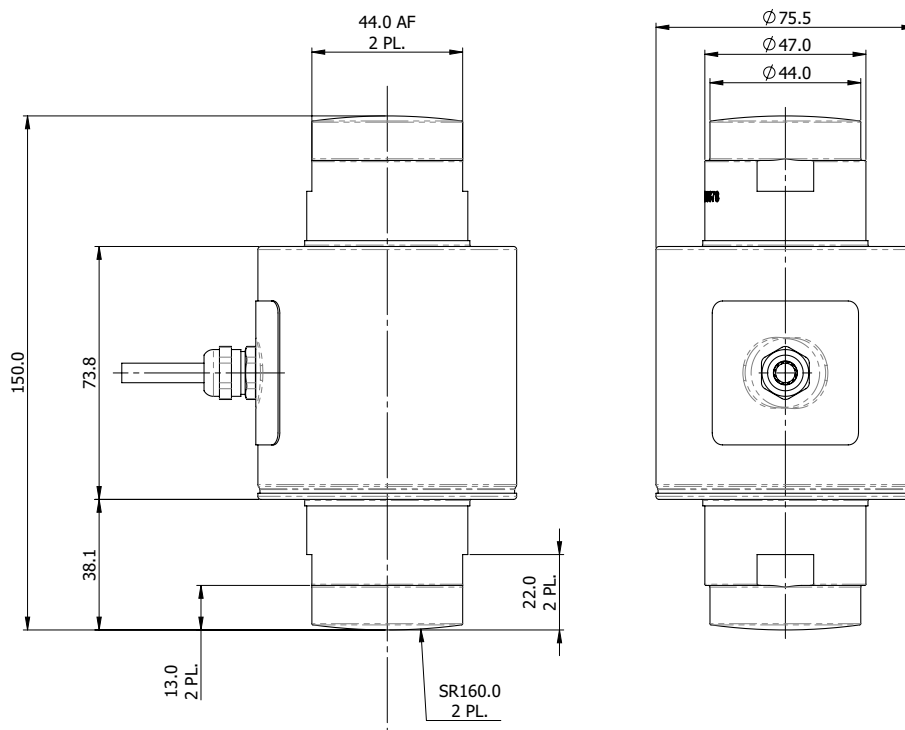
The ASC2 is a single column, stainless steel compression load cell fully compatible with original Model ASC.

This product is suitable for use in road and rail weighbridges and process weighing applications.

The fully welded construction and built-in surge protection ensures that this product can be used successfully in many harsh environments.

This load cell meets the stringent Weights and Measures requirements throughout Europe and the Americas.

OUTLINE DIMENSIONS in millimeters



Cable specifications

Cable length:	15m
Excitation +	Green
Excitation -	Black
Output +	White
Output -	Red

Shield is a bare twisted braid.

Compression Load Cell

SPECIFICATIONS								
PARAMETER	VALUE							UNIT
VPG Accuracy class	I3 (NTEP) ¹	F3	G5	G3	G2	H3	J4 ²	
Minimum utilization	33	33	50	30	20	26	30	% of R.C.
NTEP Accuracy class/ n _{max}	IIIL/10000 Multiple							
OIML Accuracy class		C2	C3	C3MR10	C3MR15	C4MR12	C6MR20	
Maximum no. of intervals (n)	10000	2000	3000	3000	3000	4000	6000	
Rated capacity—R.C. (E _{max})	20, 30, 35, 40, 50							T
Rated output—R.O.	2.0							mV/V
Rated output tolerance	0.02							±mV/V
Zero balance	0.02							±mV/V
Nominal U/R ratio	1.9740							µA/Ω
U/R ratio error	0.08							±%
Creep (30 min.)	0.050	0.025	0.025	0.025	0.025	0.018	0.013	±% of load
Zero return (30 min.)	0.015	0.025	0.017	0.017	0.017	0.0125	0.0083	±% of load
Total error	0.030	0.030	0.020	0.020	0.020	0.015	0.010	±% of R.O.
Temperature effect on output	0.0012	0.0012	0.0012	0.0012	0.0012	0.00075	0.00058	±% of load/°C
Temperature effect on zero	0.0014	0.0023	0.0023	0.0014	0.0009	0.0009	0.0007	±% of R.O./°C
Y = E _{max} /V _{min}	30000	6000	6000	10000	15000	15000	20000	
Temp. range, compensated	-10 to +40							°C
Temp. range, safe	-30 to +70							°C
Temp. range, storage	-40 to +90							°C
Maximum safe static overload	150							% of R.C.
Ultimate static overload	300							% of R.C.
Excitation, recommended	10							VDC or VAC RMS
Excitation, range	5–15							VDC or VAC RMS
Input impedance	1160 ±60							Ω
Output impedance	1011.5 ±11.5							Ω
Insulation resistance	>2000							MΩ
Cable length	15 (49)							m (ft)
Cable type	4 conductors, 24 AWG, polyurethane jacket							
Color code	+exc. Green, -exc. Black, +sig. White, -sig. Red Shield (floating): Bare, twisted braid							
Construction	Stainless steel, welded seal							
Compensation circuit type	Balanced							
Balance symmetry	5.0							Ω
Environmental protection	IP66/IP68 (100 hr at 1 m)							
Outline dimensions DWG	264.000.00-3							

¹ Class I3 (NTEP) is NTEP class IIIL approved

² Class J4 is not OIML approved

All specifications subject to change without notice.